



Amatria's 7th Birthday Celebration

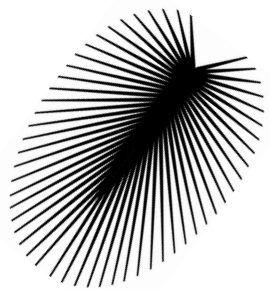
Thursday, April 18

10 A.M.

In person at Luddy Hall 4th Floor under Amatria and via Zoom
Zoom Link: <https://iu.zoom.us/j/88426214568>

Event Schedule

10:00am	Welcome and Brief Introductions
10:05am	Carrie Elizabeth Longley (Virtual)
10:10am	Luke Nikolov (Virtual)
10:15am	Todd Theriault
10:20am	Angela Caldwell
10:25am	Philip Beesley
10:30am	Cake
11:00am	End



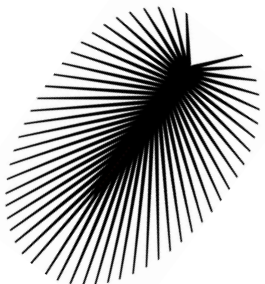
Katy Börner



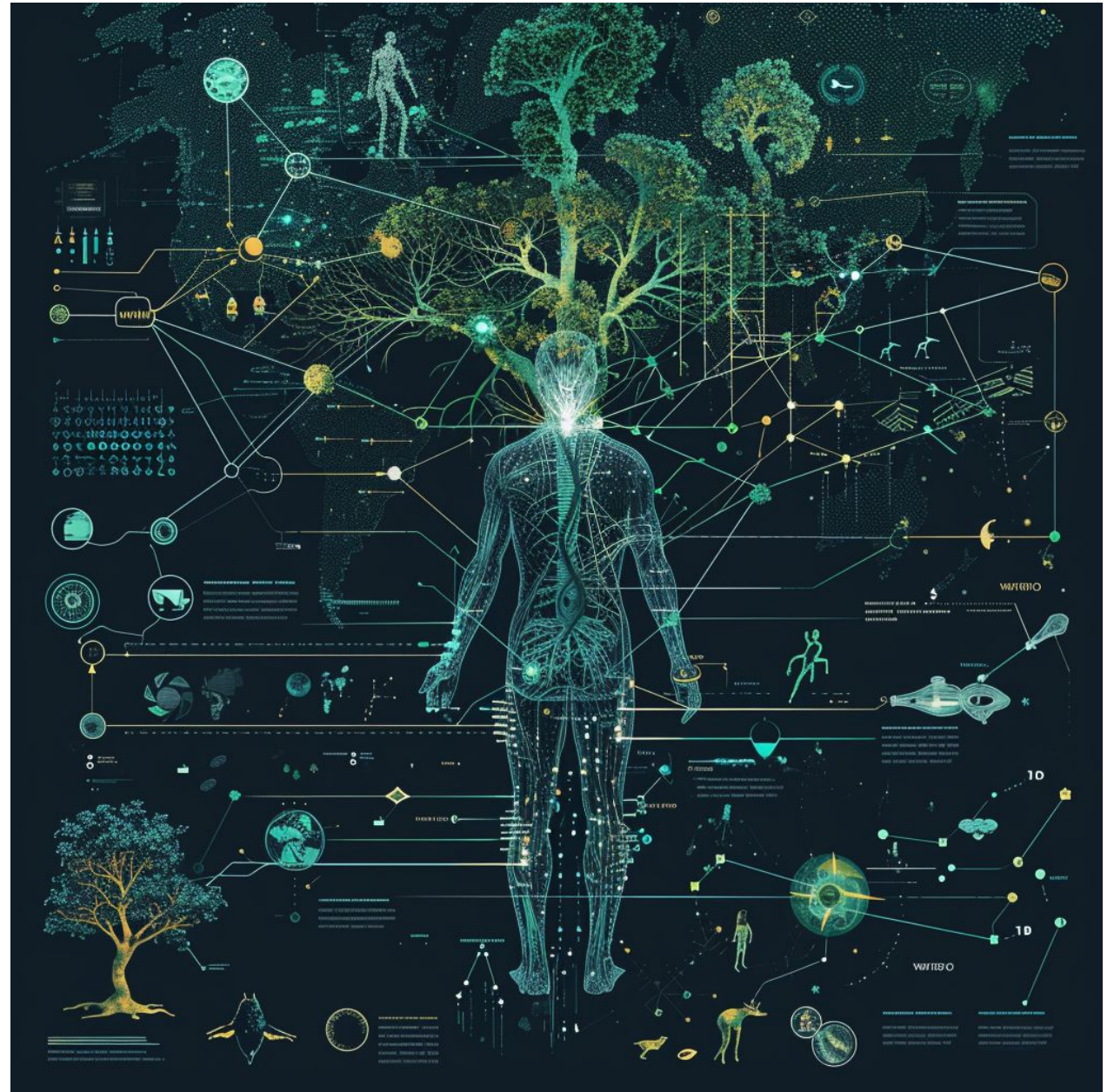
Katy Börner is the Victor H. Yngve Distinguished Professor of Engineering and Information Science in the Departments of Intelligent Systems Engineering and Information Science, Luddy School of Informatics, Computing, and Engineering; core faculty of the Cognitive Science Program; and founding director of the Cyberinfrastructure for Network Science Center (<http://cns.iu.edu>)—all at Indiana University in Bloomington, Indiana.

She is also a visiting professor at the Royal Netherlands Academy of Arts and Sciences (KNAW) in the Netherlands and Humboldt Fellow, Dresden University of Technology, Germany. Börner became a Fellow of the American Association for the Advancement of Science (AAAS) in 2012, a Humboldt Research Fellow in 2017, and an Association for Computing Machinery (ACM) Fellow in 2018. Since 2005, she serves as a curator of the international *Places & Spaces: Mapping Science* exhibit (<http://scimaps.org>).

She has very warm, motherly feelings toward Amatria and loves to see her grow up surrounded by much human intelligence and interaction.



3rd Decade of *Places & Spaces:* Envisioning Intelligences (2025-2034)



Envisioning Intelligences

Including

- linguistic, kinesthetic, communication, musical, emotional, and other intelligences by biological and technological life forms

with a focus on

- collaboration & coordination across life forms and intelligence types

to inspire discussion about

- existing and future sensors & actuators, memory & reasoning, exploration & communication, plus shared goals & desirable futures.

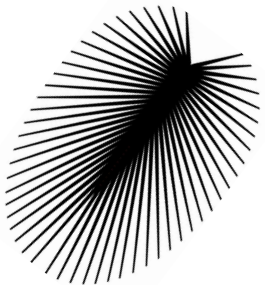


.master_of_code_global using <https://www.midjourney.com>

Carrie Elizabeth Longley



Carrie Elizabeth Longley is a studio artist and educator. She is currently an Associate Professor of Fine Art at Indiana University East. She holds a BA in Studio Art from Wittenberg University and an MFA from Indiana University in Bloomington, Indiana. She exhibits her work extensively throughout the United States and has received numerous awards including “Emerging Craftsman” from Ohio Designer Craftsman, “The Bobby Kadis Award” at the Penland School of Crafts, MCACD Individual Artist Fellowship, and the \$10,000 William and Dorothy Yeck “Young Sculptor’s Award.”



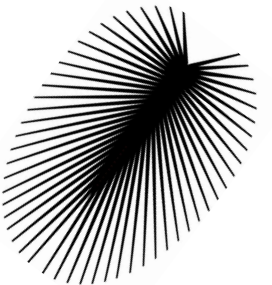


Capillus linus
12"x6"x6", 2009
ceramic, wire, pig
intestine, and mixed
media

Luke Nikolov



Dr. Luke Nikolov is an Assistant Professor of Biology at Indiana University Bloomington. He was a Postdoctoral Fellow from the Max Planck Institute for Plant Breeding Research, holds a Ph.D. in Biology from Harvard University, and received his B.A. in Biochemical Sciences from Harvard University. His research specializes in plant development and evolution, transcription factors in floral development, and single-cell genomics.

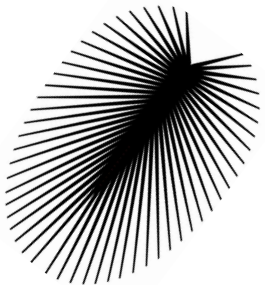


Todd Theriault

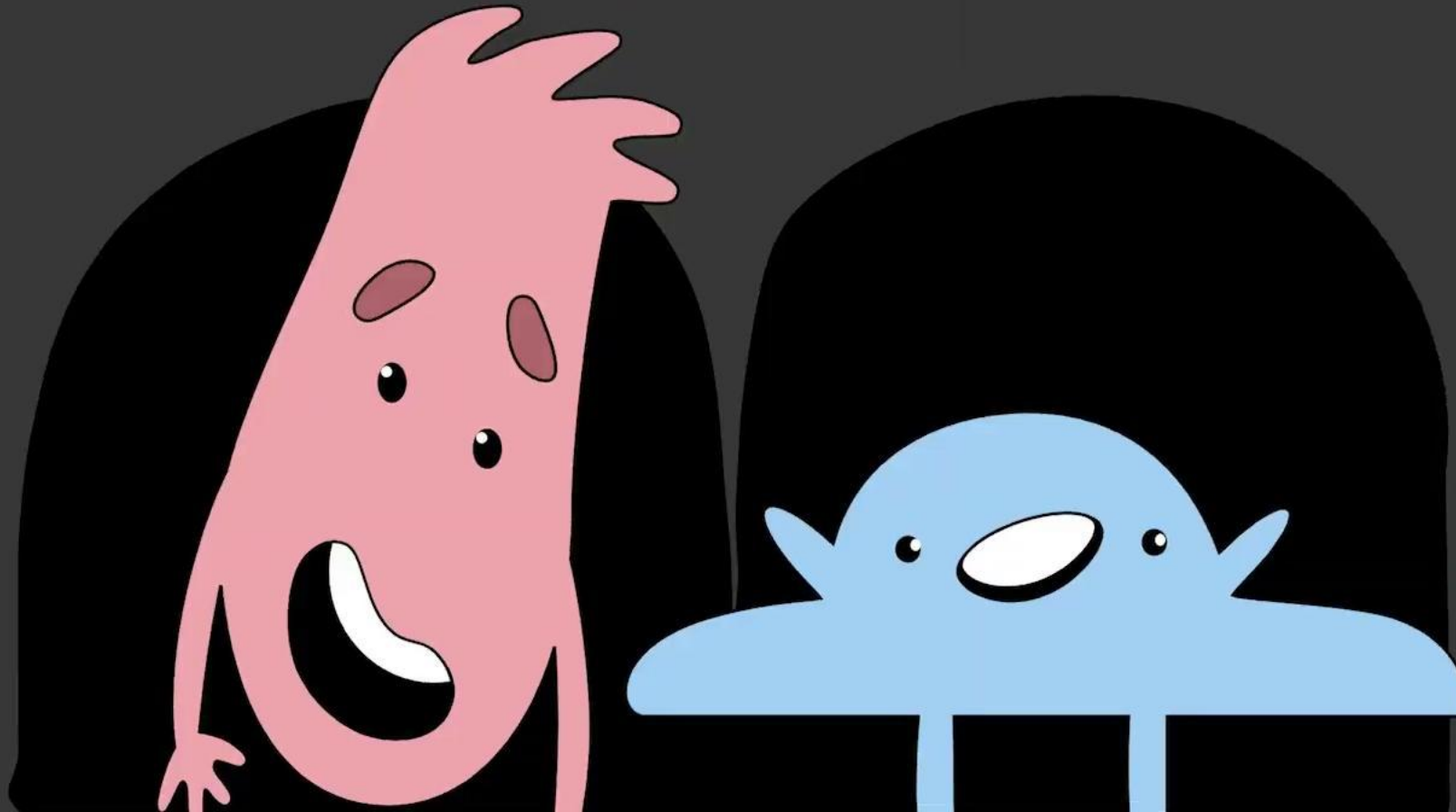


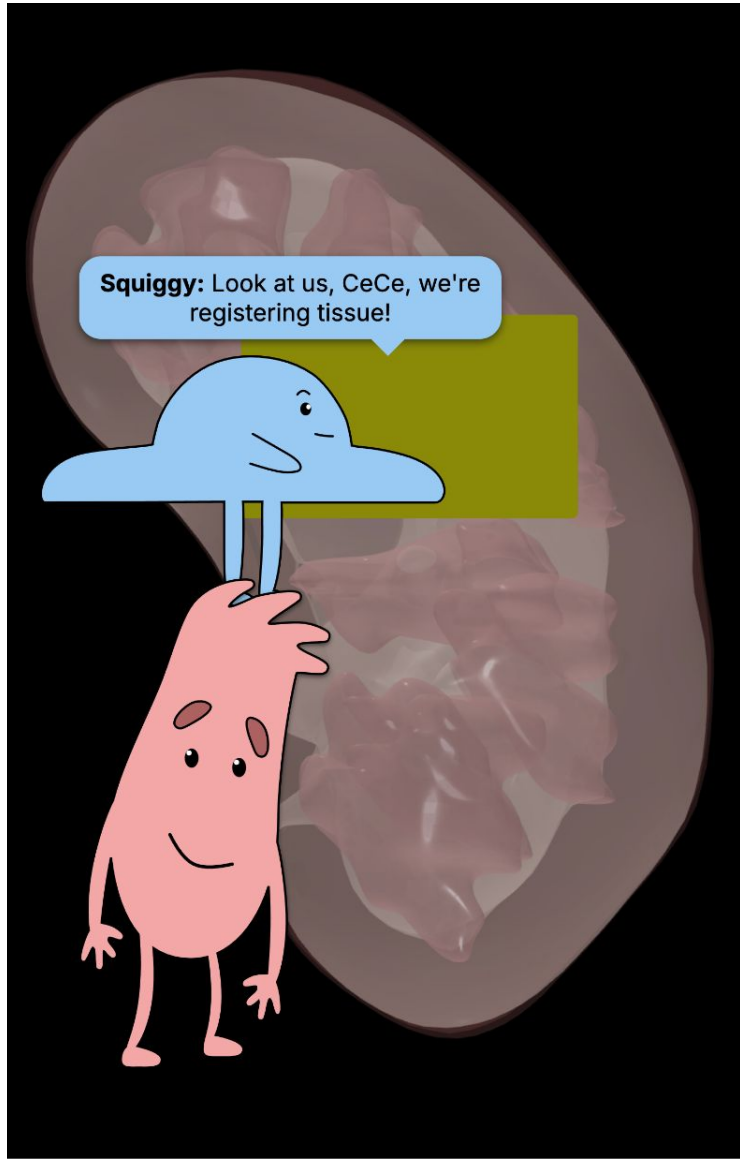
Co-curator of *Places & Spaces* exhibit

Todd joined CNS in 2012 as Exhibit Co-Curator and Copy Editor. With a BA in English from the University of Wisconsin-Milwaukee and an MA in English from Miami University of Ohio, he previously spent time teaching classes on poetry, fiction, and creative writing to students at Miami University, University of Cincinnati, Xavier University, and Indiana University.



CeCe: We can use the Human Reference Atlas to figure out what you are and where you belong!





IU Luddy School of Informatics, Computing, and Engineering

March 27, 2018 · 🌐



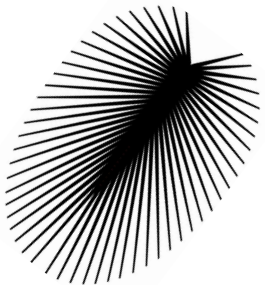
VOLUNTEERS NEEDED to assist with on-site assembly of the "Amatria" sentient sculpture installation on the 4th floor of Luddy Hall between 10am–5pm through March 31. Hands-on training and snacks provided. Drop in or sign up at <http://bit.ly/2C52x2T>

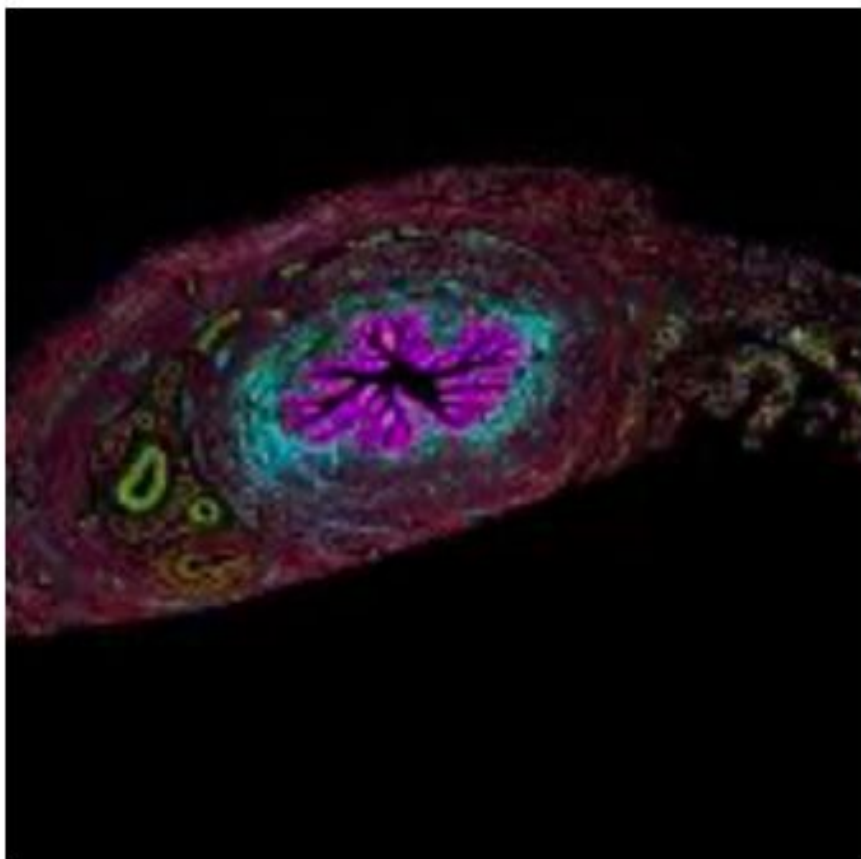


Angela Caldwell



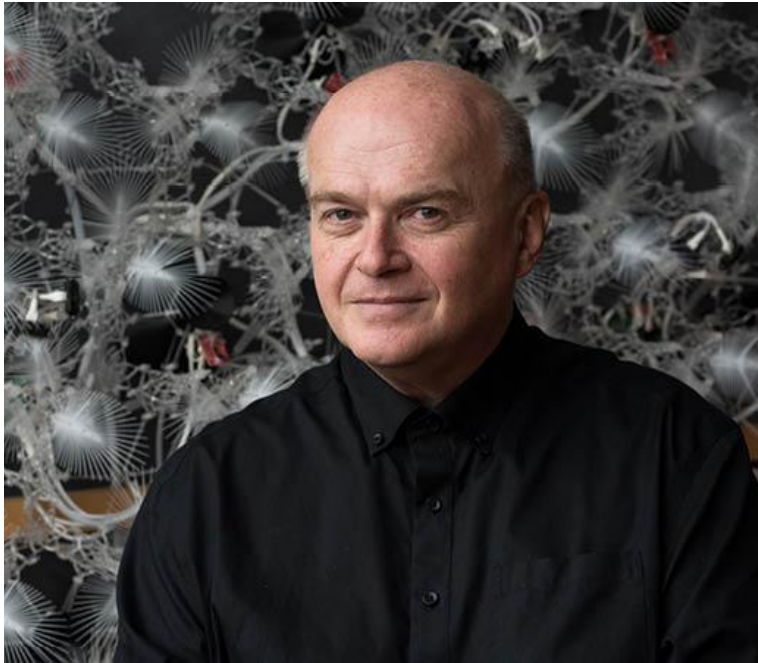
Angela Caldwell, Visiting Assistant Professor, Metalsmithing and Jewelry Design, Indiana University, Bloomington, is an artist and educator. Using both fiber and metals-based materials and techniques, her work explores the nuances and complicated nature of family, female friendships, community, and memory from a traditional craft perspective. As an educator, she strives to foster curiosity, community, strong foundational techniques, and a commitment to fine craft. She holds an MFA in Metalsmithing and Jewelry Design from Indiana University.





Beauty is Everywhere
14" x 14, 2024
wool, glass beads

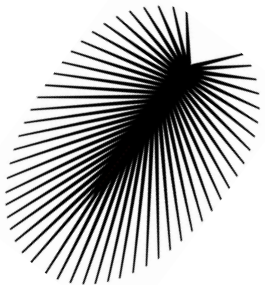
Philip Beesley



Philip Beesley is a practicing visual artist, architect, and Professor in Architecture at the University of Waterloo and Professor of Digital Design and Architecture & Urbanism at the European Graduate School. Beesley's work is widely cited in contemporary art and architecture, focused in the rapidly expanding technology and culture of responsive and interactive systems.

He serves as the Director for the Living Architecture Systems Group, and as Director for Riverside Architectural Press. His Toronto-based practice, Philip Beesley Architect Inc., operates in partnership with the Europe-based practice Pucher Seifert and the Waterloo-based Adaptive Systems Group, and in numerous collaborations including longstanding exchanges with couture designer Iris van Herpen and futurist Rachel Armstrong.

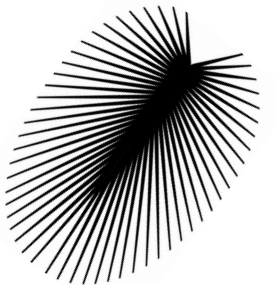
As an internationally recognized expert and pioneer in kinetic, responsive, near-living architectural installations, Philip Beesley leads the LASG Partnership and the Scaffolds research stream. As the leader of numerous collaborative projects, Beesley has senior level experience managing large, complex multidisciplinary teams and large-scale public architecture. Work resulting from the previous SSHRC partnership were presented in several public venues including the 2012 Biennale of Sydney. As a Professor at the University of Waterloo, School of Architecture he has mentored +1500 architecture students. He has authored and edited 19 books and has been the chair for numerous symposia and conferences.



In her 7 years, *Amatria* has welcomed many guests, visitors, and friends around her.

This past year, the IU Trustees and IU Alumni had the opportunity to experience and meet Amatria.

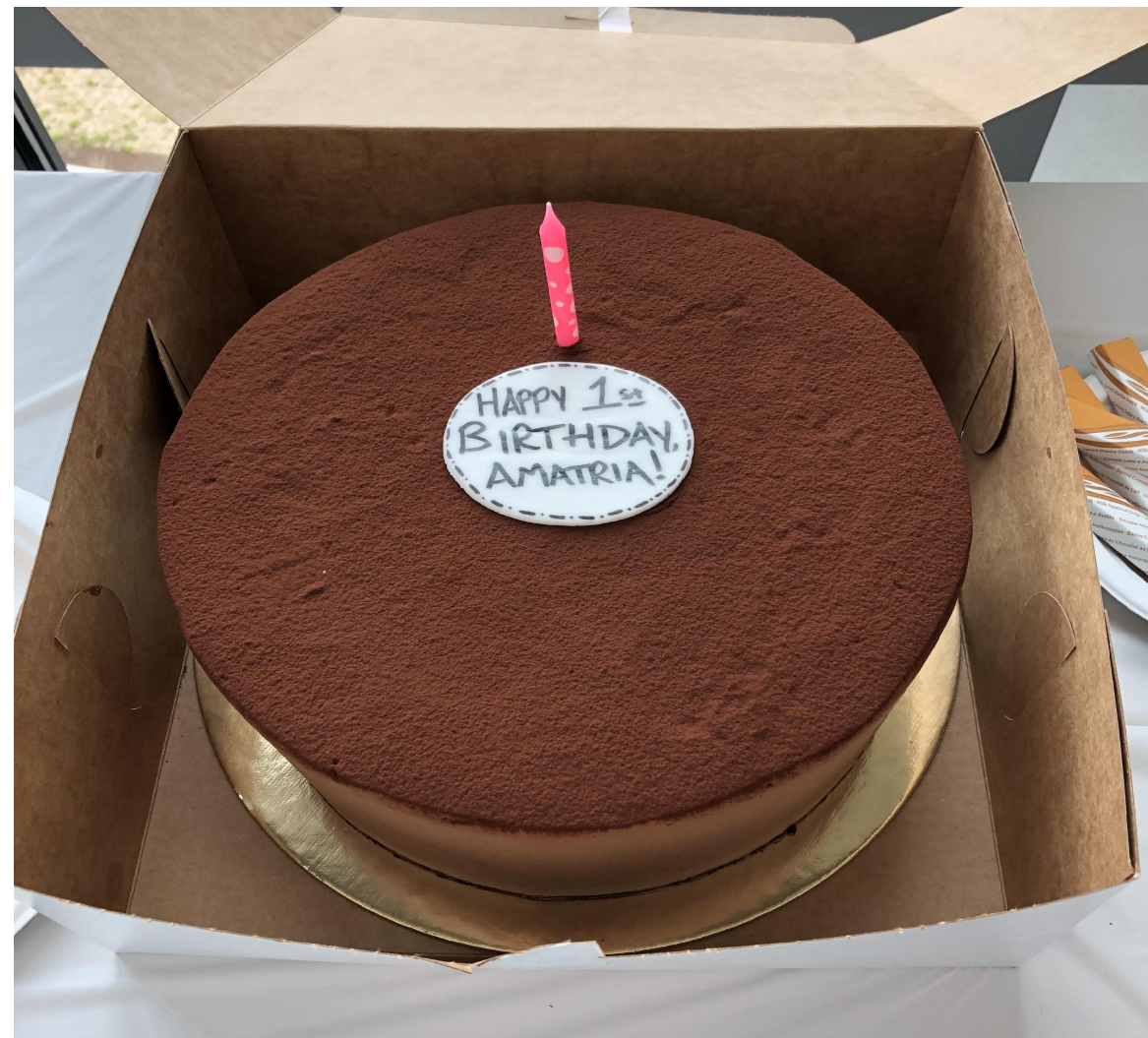
In previous years, Amatria had several notable tours, including one for Indiana Governor Eric Holcomb in 2019 and for Dean Joanna Millunchick in 2023.



Birth of *Amatria* with 'dad' Philip Beesley and his team (4.11.2018)



Amatria's 1st Birthday Celebration (04.11.2019)



Internet of Things Wearables in Motion Symposium (04.26.2019)



Visit of Governor Eric Holcomb, IU President Michael McRobbie, Dean Raj Acharya



Amatria gets a glow-up (July, 2019)



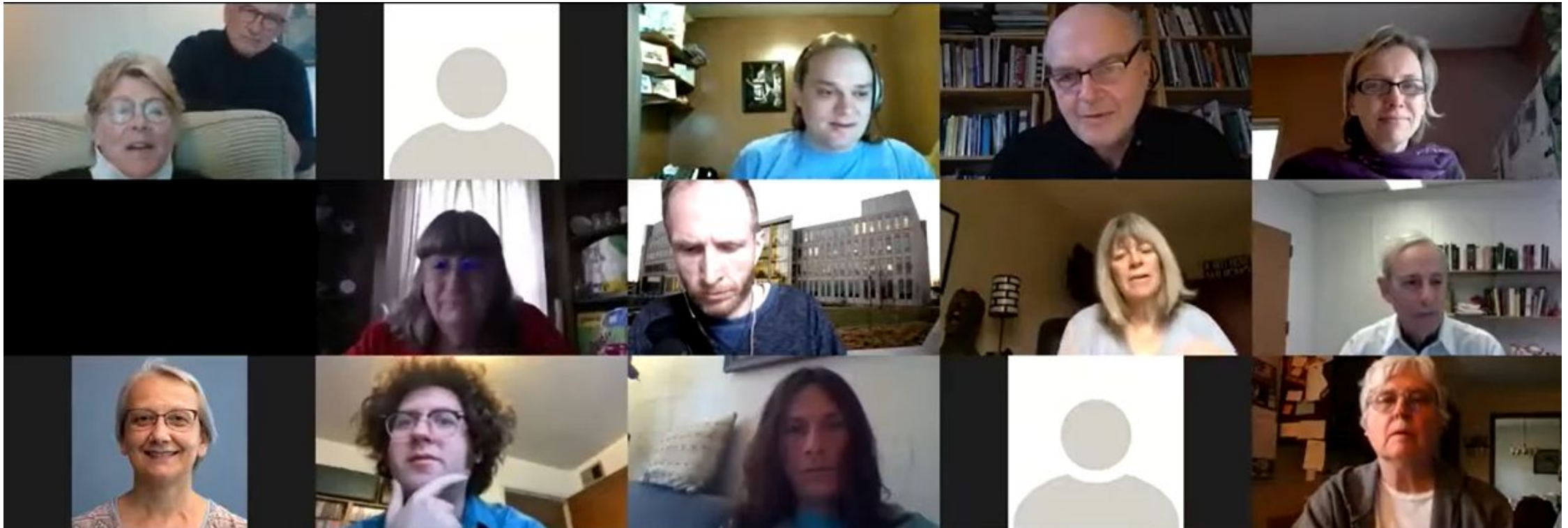
Tour for Women's Colloquium of IU (10.25.2019)



Amatria's 2nd Birthday Celebration (04.13.2020)

Event recording on Youtube:

<https://www.youtube.com/watch?v=w3wloIAkjL0&t=332s>



Amatria Tour for Data Science Online Students (02.28.2020)



Eskenazi Art Museum Visitors (02.26.2020)

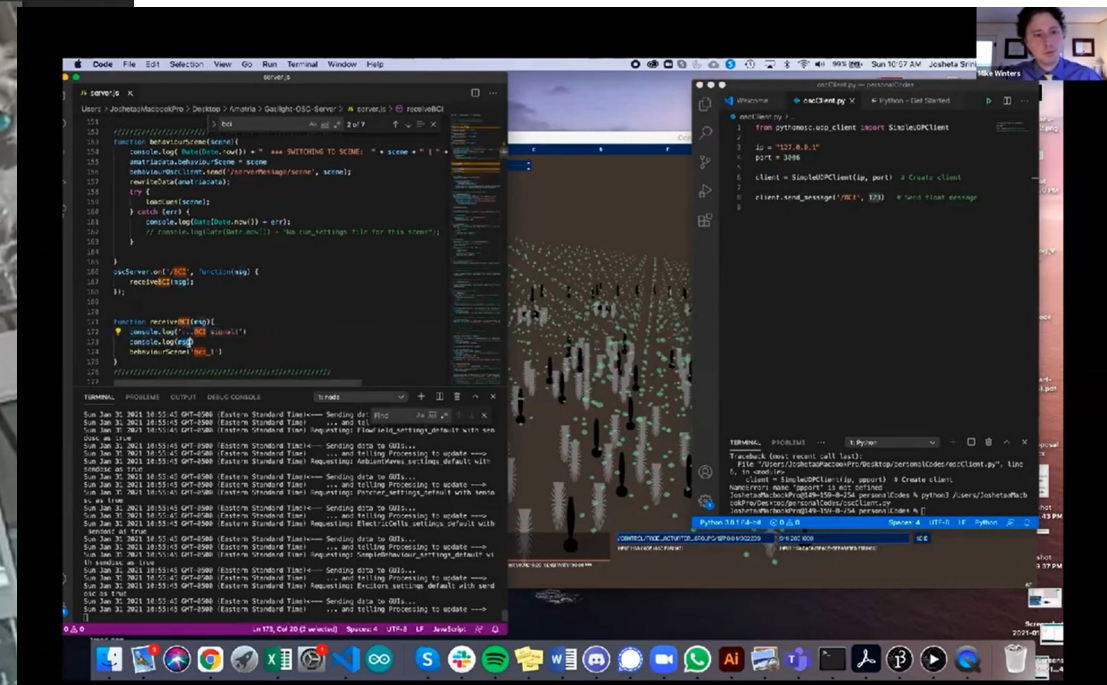
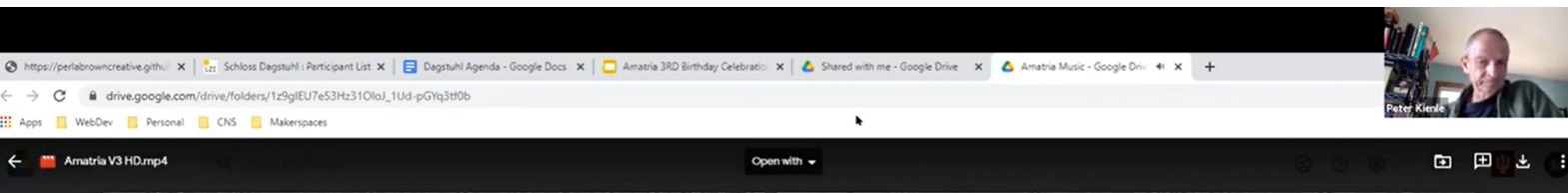




Amatria's 3rd Birthday Celebration (04.12.2021)

Event recording is available on Youtube:

<https://www.youtube.com/watch?v=fR0GdoUimL0>



Amatria tour for Division of Student Affairs (Aug, 2021)



Amatria tour for Center of Excellence for Women & Technology's affiliate students (Oct 2021)



Amatria's 4th Birthday Celebration



April 2022 Thursday Festival (APR, 2022)



Amatria tour for Research Experiences for Undergraduates (June, 2022)



Amatria's 5th Birthday Celebration





ISSI 2023 Conference Tour (July, 2023)



Amatria's 6th Birthday Celebration (4.11.2024)



IU Alumni Tour (July, 2024)



Scenes of Amatria being recorded to feature on Indiana University's - 'Impact on the Future' (March 2025)



Amrut & Ansh, David Ebbinghouse



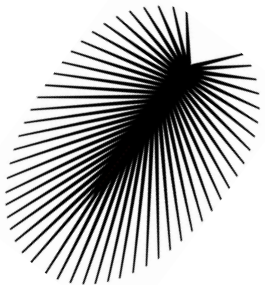
(1' x 1') Plastic bottles, plexiglass, zip ties

(2' x 2') Plastic bottles, plexiglass, mylar, receipt paper spools, LEDs

2022

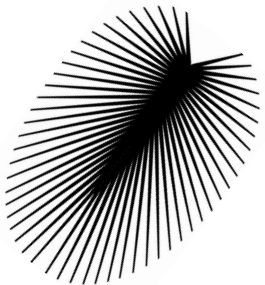
These pieces emerged from Ebbinghouse's experience helping to create Amatria, and incorporate left over plexiglass and mylar from her construction. The circular forms are inspired by cells, and the LEDs in Amrut both draw the viewer's eye and evoke the metabolic process of the cell drawing in and processing nutrients.

Titles were collectively assigned by CNS Center staff, with Ansh meaning 'part' and Amrut meaning 'pure' in Hindi.



Happy *Amatria* Birthday
Celebration!

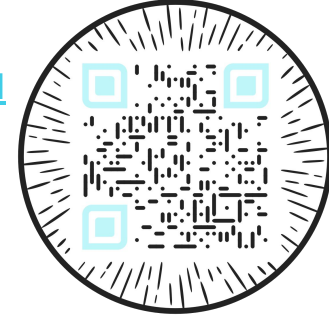
Thank you for joining.



Social Media

Want to learn more about Amatria and what we do? Visit us!

Website <https://cns.iu.edu/amatria.html>



Join us, stay informed,
and help amplify the amazing things
happening at CNS.
We can't wait to see you online!



FACEBOOK

<https://www.facebook.com/cnscenter>



INSTAGRAM

https://www.instagram.com/cns_at_iu/?hl=en

X
<https://twitter.com/cnscenter>



LINKEDIN
<https://www.linkedin.com/company/cns-indiana-university-bloomington/people/>



<https://cns.iu.edu>